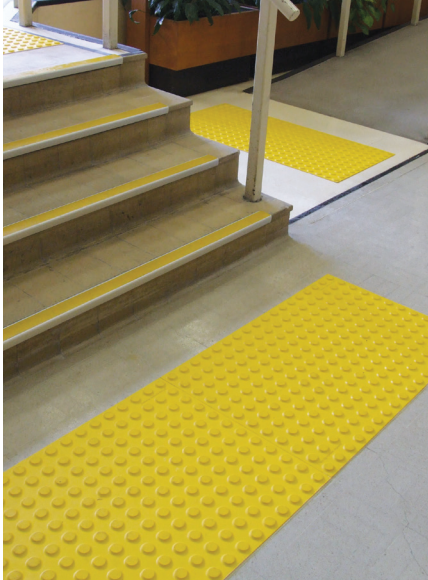


# PolyTile®

Easy to install with high adherence to building safety requirements



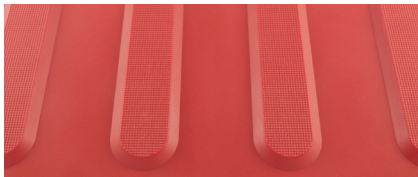
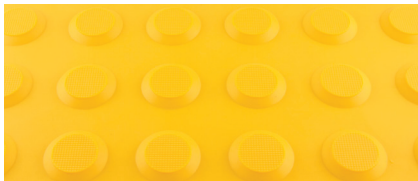
The need for an instant installation of tactile indicators shouldn't mean a compromise in safety. PolyTile® self-adhesive tactile indicator tiles can be laid in minutes but still provide very high adherence to building safety requirements.



PolyTile® tactile guidance products are designed as durable yet simple peel & stick tiles which can be applied to almost any walkway, stair or ramp to provide immediate compliance to the Australian Standard AS1428.4.

They are light weight, simple to install - just peel and stick, and provide builders the most effective and quick option for code compliance.

PolyTile® is manufactured from polyurethane polymer with wear resistance that exceeds that of steel and will not discolour, crack or degrade over time.



## KEY FEATURES

- DIY peel and stick installation; no technical skills required
- Available in both hazard (stud) and directional (rib) profiles
- Strong PSA adhesive resists movement, internal use only
- Available in five colours: terracotta, yellow, black, ivory & grey
- AS4586 P5 slip resistance rating
- Highly cost effective
- Complies with all AS1428 tactile product design requirements

## APPLICATIONS

Suitable for high traffic internal areas. Ideal for office buildings, apartments, transport and educational facilities.

## DIMENSIONS

PolyTile® is manufactured in a standard tile size of 300x300mm with a square edge to ensure a tight butt joint with minimal gaps. 3mm Peel and Stick base with AS1428 compliant 5mm stud height.

Please see the next page for Product Data.



## PRODUCT OPTIONS

COLOUR	HAZARD	DIRECTIONAL
Ivory	PTH-108	PTD-108
Yellow	PTH-112	PTD-112
Grey	PTH-155	PTD-155
Black	PTH-160	PTD-160
Terracotta	PTH-124	PTD-124

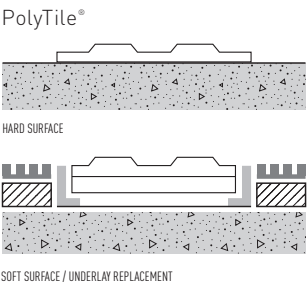
## INSTALLATION METHOD

PolyTile<sup>®</sup> Tactiles may be laid over most substrates in the same way as many other rubber or vinyl tiles. Lay out the area (ensuring 300mm from change of gradient) using a string line. Dry lay the tiles to ensure they are in the correct place and lie flat on the substrate.

## COLOURS

IVORY
YELLOW
GREY
BLACK
TERRACOTTA

## INSTALLATION



## PRODUCT DATA

Dimensions	300 x 300 x 3+5
Product Weight	420g
Packaging Size	300 x 300 x 300
Quantity in Package	36 (5.4 LM)
Package Weight	15.2 kg
AS1428 Compliant	Yes
AS4586 (Hazard)	73 / P5
AS4586 (Directional)	73 / P5
NCC Compliant	Yes
Materials	Polymer
UV Stable	Yes
Warranty	2 Years
Life Expectancy	10 years
Indoor Use	Yes
Outdoor Use	Yes*

\* When used with a suitable moisture barrier, refer to product installation instructions