

WATER FILLED BARRIER PRODUCT SELECTION GUIDE

1

Does the barrier need to be crash/MASH tested?

YES

NO

2

What speed zones are you using the barriers for?

< 70KM / HR

< 40KM / HR

< 20KM / HR

3

Is it a high traffic or low traffic area?

HIGH

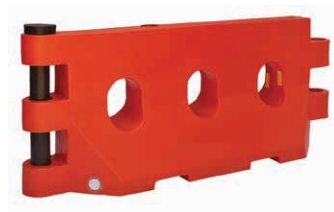
LOW

ArmorZone™

Heavy Duty

Interlocking

Stackable



| CODE | DESCRIPTION |
|--------|----------------------|
| A48081 | Barrier Red |
| A48082 | End Treatment Yellow |

| CODE | DESCRIPTION |
|--------|-------------|
| A17600 | Orange |
| A17601 | White |

| CODE | DESCRIPTION |
|--------|-------------|
| A38274 | Red |
| A38275 | Yellow |

| CODE | DESCRIPTION |
|--------|-------------|
| A47640 | Orange |
| A47641 | White |

*The above information is for reference only. The selection of a barrier is ultimately the customers responsibility and we advise checking with your relevant local, state and national regulatory bodies to ensure that you are using the correct product for the correct application. Seton takes no responsibility for the incorrect selection and use of barriers.

WATER FILLED BARRIER COMPARISON GUIDE

ArmorZone™



Heavy Duty



Interlocking



Stackable



| Part Numbers | Barrier Red - A48081 End Treatment Yellow - A48082 | Orange - A17600 White - A17601 | Red - A38274 Yellow - A38275 | Orange - A47640 White - A47641 |
|------------------------|--|---|--|---|
| Suggested speed Zones | <70km | <40km | <20km | <20km |
| Crash Tested? | ✓ | ✗ | ✗ | ✗ |
| Complies to | MASH 70KMPH TL1 & TL2 | AS 1742.3 for Containment fence and pedestrian delineation | AS 1742.3 for Containment fence and pedestrian delineation | AS 1742.3 for Containment fence and pedestrian delineation |
| Application | Construction Sites, Heavy Civil Sites, Medium speed Zone Areas <70km/h, Car Parks, Road Closures, Airports, Pedestrian Delineation, Crowd Control, Events and Sporting activities, General Delineation | Construction Sites, Heavy Civil Sites, Low speed Zone Areas <40km/h, Car Parks, Road Closures, Airports, Pedestrian Delineation, Crowd Control, Events and Sporting activities, General Delineation | Work Sites, Foot Paths, Car Parks <20km/h, Pedestrian Delineation, Crowd Control, Events and sporting activities, Agriculture and Farming, General Delineation | Foot Paths, Car Parks, Pedestrian Delineation, Crowd Control, Events and sporting activities, General Delineation |
| Length (mm) | 2000mm | 2000mm | 1450mm | 1100mm |
| Width (mm) | 450mm | 200(Top) x 600(Bottom)mm | 250(Top) x 485(Bottom)mm | 550mm |
| Height (mm) | 860mm | 900mm | 800mm | 800mm |
| Weight Empty (kg) | 56kg | 32kg | 15kg | 8kg |
| Weight Filled (kg) | 496kg | 330kg | 200kg | 80kg |
| UV Treated? | ✓ | ✓ | ✓ | ✓ |
| Material | High-Density Stabilised Polyethylene (UV8) | Tough Polyethylene | Polyethylene | Polyethylene |
| Colours | Red | Orange or White | Red or Yellow | Orange or White |
| Reflective Tape | ✗ | ✗ | ✓ | ✓ |
| Forklift Friendly | ✓ | ✓ | ✓ | ✓ |
| Dispatch Locations | Sydney & Perth | Sydney, Melbourne & Perth | Sydney, Melbourne & Perth | Sydney & Perth |
| Rotation Angle | Minimal | Can be rotated up to 90 Degrees | Cannot be angled | Can be rotated up to 90 Degrees |
| Hinge Pin | Yes, double | Yes, single semi-retractable | No pins required | Yes |
| Water Drainage Plugs | One at the back | Two. One on either side | One at the back | Two. One on either side |
| Country of Manufacture | New Zealand | Australia | China | China |
| Cost | \$\$\$\$ | \$\$\$ | \$\$ | \$ |

Additional freight charges may apply for bulky items & bulk quantities.

*The above information is for reference only. The selection of a barrier is ultimately the customers responsibility and we advise checking with your relevant local, state and national regulatory bodies to ensure that you are using the correct product for the correct application. Seton takes no responsibility for the incorrect selection and use of barriers.